

# **Féile Luimnigh - Instrumental Section**



**4<sup>th</sup> – 8<sup>th</sup> February 2025**

Last Updated: October 11th, 2024

# TABLE OF CONTENTS

REGULATIONS	3
PRIZES	6
COMPETITIONS FOR ALL INSTRUMENTS	7
ENSEMBLE COMPETITIONS	8
KEYBOARD	10
STRINGS	13
CLASSICAL GUITAR	18
RECORDER	20
WOODWIND	21
BRASS	22
NON-COMPETITIVE	23

---

## REGULATIONS

---

1. Entries must be made online, which must be completed in every detail.
2. While students of all ages are encouraged to participate, **all entry forms must include a teacher's name who can certify that the entrant is of the relevant standard and age.**
3. The committee reserves the right to refuse entries if any classes are oversubscribed. Entries will be accepted in the order received. The committee also reserves the right to cancel a class if it is undersubscribed.
4. All correspondence is encouraged to be made via email to [feileinstrumental@gmail.com](mailto:feileinstrumental@gmail.com).
5. The **CLOSING DATE** for all entries is **Friday November 8<sup>th</sup>, 2024**.  
Late entries will be accepted at an additional cost until Friday November 22<sup>nd</sup>, 2024.
6. Competitors entering Féile must be of **AMATEUR** status only. An amateur is considered to be one who does not derive the main part of his/her income from performing as an instrumentalist. However, holders of Diplomas (Performers' or Teachers') ARE eligible to take part.
7. The Committee reserves the right to appoint replacement or additional Adjudicators and Official Accompanists.
8. The order of competing will be decided by ballot, **and times and dates of competitions together with competitor order will be published on the website three weeks prior to the festival.**
9. No competitor will be permitted to perform more than once in the same competition.
10. Competitors may only enter one age category per year (e.g. an 8-year-old can enter either under 9 or under 11, but cannot enter both competitions).
11. A competitor who wins a competition may not enter that competition again. The exceptions to this rule are the Conducted Ensembles competitions.
12. Age restrictions are applicable to the competitor's age on **1 January, 2025** i.e. u/11 (under 11) means up to and including age 10 (as of 1<sup>st</sup> January 2025).
13. Competitors may not play the same piece in more than one competition with the exception of the Intermediate and Advanced Open Recital competitions.
14. Competitors should not begin their performance until the Adjudicator so indicates. The Adjudicator may also stop the performance at any point.
15. During Féile, any enquiry or representation to the Adjudicator must be made only through the Féile Committee Representative.

16. **Video, sound recording, and photography are not permitted during the performance or adjudications.**
17. **MARKS:** All Competitive competitors will receive adjudication and a written report.
18. **CUPS** may be awarded to winners gaining a mark of 85% or over. Prizes may be withheld at the discretion of the Adjudicator, whose decision in all cases will be final. Cups will be presented at the end of the adjudication. Cup winners will be required to sign a safe custody and safe return undertaking for each cup awarded. All Cups from previous years must be returned to a Féile Committee Representative, properly cleaned and in good repair by **Friday, December 6<sup>th</sup>, 2024**. Suitable inscription, preferably on the plinth where appropriate, is permitted at the holder's expense.
19. An original or copy of 'own choice' music must be made available to the Adjudicator at the beginning of each competition.
20. **COPYRIGHT ACT.** The Music Publishers' Association has issued a revised Code of Practice on photocopying copyright works, and the following concession is made for photocopying: Own Choice pieces from VOLUMES ONLY for the Adjudicator. Other items must not be photocopied without the permission of the copyright holder, usually the Publisher: "When an Own Choice work is selected from a publication containing several different works and which is not published separately, one copy may be made for the use of the Adjudicator, provided that the competitor has already purchased his/her own copy, and that the photocopy is retained and destroyed by the Administrator immediately afterwards."
21. The Committee reserves the right to:
  - Disclaim all responsibility for injury or damage sustained by any competitor or member of the audience, or for the loss of music or personal effects not collected at the end of each session.
  - Decide all other matters connected with the conduct of the Féile not provided for in these regulations, and reserves the right to change or cancel any rules or arrangements it deems necessary for the smooth running of the Féile.
  - Cancel and refund any entry due to oversubscription or undersubscription of classes. In no other case is the entry fee refundable.
  - Decide on all questions or disputes arising out of or not provided for by these rules, which shall be final.

\* We respectfully ask that, where stated, time limits are adhered to. When performers overrun this causes significant problems for the running of the competitions, including the timetables for adjudicators and accompanists, the venue, and is also unfair on all those competitors who have respected the time constraints. Competitors who overrun are at risk of either being stopped mid-performance or of having marks deducted.

## ARRANGEMENTS FOR ACCOMPANISTS

1. Féile Luimnigh provides Official Accompanists.
2. If intending on using the Official Accompanist you must mail or hand deliver printed copies of “choice pieces” by **Friday, November 22<sup>nd</sup>, 2024**. Please supply clear copies of your chosen pieces, pages taped together (if necessary), with the competitor’s name, teacher’s name, and competition details clearly marked. After this date, Official Accompanists are not obliged to play for a performer.

Forward Accompaniments to:

**Féile Luimnigh Instrumental  
Music Accompaniments  
c/o Peter Barley  
St Mary’s Cathedral  
Bridge Street  
Limerick  
V94 E068.**

3. Please send an email to let us know if you are **not** using the Official Accompanist for your competition.
4. We strongly recommend arranging a rehearsal with the Official Accompanist in advance, the Official Accompanist will be announced with the timetable three weeks prior to the competition. The fee for a rehearsal with an Official Accompanist is €12.50 per 15-minute rehearsal, €25 per half hour rehearsal and €50 per one hour rehearsal. Only one rehearsal is permitted per competitor with the Official Accompanist.

## CONTACT

Please send all queries to [feileinstrumental@gmail.com](mailto:feileinstrumental@gmail.com).

---

## PRIZES

---

The following prizes will be awarded:

- Most promising player in the Piano competitions €50
- Most promising player in the String competitions €50
- Most promising player in the Woodwind and Brass competitions €50
- Winners of the Larry Daly Memorial Trophy for Senior Conducted Ensemble (Competition 8) €100
- Winner of the Intermediate Open Recital (Competition 1) €100
- Winner of the Advanced Open Recital (Competition 2) €250
- Winners of the Irish Chamber Orchestra Cup for Senior Chamber Music (Competition 5) €100

---

# COMPETITIONS FOR ALL INSTRUMENTS

---

## OPEN RECITAL COMPETITIONS

### **Intermediate Open Recital**

*Open to solo performers of any instrument, up to and including 16 years of age.*

### **Competition 1**

*Entry Fee €30*

### **Winner will receive €100 Prize**

Competitors may perform music they are performing in other competitions.

A programme of at least two pieces (or movements) that is of a minimum Grade 5 standard, not exceeding 12 minutes.

### **Advanced Open Recital**

*Open to solo performers of any instrument, no age restriction.*

### **Competition 2**

*Entry Fee €35*

### **Winner will receive €250 Prize**

Competitors may perform music they are performing in other competitions.

A programme of at least two pieces (or movements) that is of a minimum Grade 7 standard, not exceeding 15 minutes.

---

# ENSEMBLE COMPETITIONS

---

## CHAMBER MUSIC

### **Junior Chamber Music**

2 – 8 performers, pre-Grade 1

*Teacher to verify that all players are pre-Grade 1*

### **Competition 3**

*Entry fee €5*

*per person*

A programme, not exceeding 5 minutes, of at least two pieces  
(two movements from the same work will be accepted as two pieces)

### **Intermediate Chamber Music**

2 – 8 performers, Grades 1 – 4

*Teacher to verify that all players are Grades 1 - 4*

### **Competition 4**

*Entry fee €5*

*per person*

A programme, not exceeding 8 minutes, of at least two pieces  
(two movements from the same work will be accepted as two pieces)

### **The Irish Chamber Orchestra Cup for Senior Chamber Music**

2 – 8 performers, Grade 5 and over

*Teacher to verify that all players are Grade 5 and over*

### **Competition 5**

*Entry fee €5*

*per person*

### **Winning group will receive €100 Prize**

A programme, not exceeding 12 minutes, of at least two pieces  
(Two movements from the same work will be accepted as two pieces)



## CONDUCTED ENSEMBLES

### **Junior Conducted Ensemble**

Minimum 8 performers (not including conductor)  
*with no upper limit on numbers, pre-Grade 1*

### **Competition 6**

*Entry fee €2  
per person*

*Teacher to verify that all players are pre-Grade 1*

A programme, not exceeding 5 minutes, of at least two pieces  
(two movements from the same work will be accepted as two pieces)

### **Intermediate Conducted Ensemble**

Minimum 8 performers (not including conductor)  
*with no upper limit on numbers, Grades 1 – 4*

### **Competition 7**

*Entry fee €2  
per person*

*Teacher to verify that all players are Grade 1 - 4*

A programme, not exceeding 8 minutes, of at least two pieces  
(two movements from the same work will be accepted as two pieces)

### **The Larry Daly Memorial Trophy, Senior Conducted Ensemble**

Minimum 8 performers (not including conductor)  
*with no upper limit on numbers, Grade 5 and over*

### **Competition 8**

*Entry fee €2  
per person*

### **Winning group will receive €100 Prize**

*Teacher to verify that all players are Grade 5 and over*

A programme, not exceeding 12 minutes, of at least two pieces  
(two movements from the same work will be accepted as two pieces).

---

# KEYBOARD

---

## PIANO

### Under 8 Piano

#### Competition 9

*Entry fee €20*

1. Set Piece  
**A Very Sad Story** (Piano Lessons Book 1 Waterman and Harewood)  
OR  
**Lavender Blue** (More Making the Grade Preparatory Grade Arr. Lynda Frith)
2. Own Choice Contrasting piece, not exceeding 2 minutes

### Under 10 Piano

#### Competition 10

*Entry fee €20*

1. Set Piece  
**Pirates Coming!** by Edmund Jolliffe from Piano Star 3  
OR  
**A Song of Erin** from First Year Pieces by Thomas Dunhill
2. Own Choice Contrasting piece, not exceeding 3 minutes

### Under 12 Piano

#### Competition 11

*Entry fee €20*

1. Set Piece  
**Beethoven Romance** from Sonatina in G WoOAnh. 5  
OR  
**Mazurka Op. 98 no. 13** by Grechaninov in Short Romantic Pieces for Piano Book 1 ed. Lionel Salter (ABRSM)
2. Own Choice Contrasting piece, not exceeding 4 minutes

### Under 14 Piano

#### Competition 12

*Entry fee €20*

1. Set Piece  
**Bach Two Part Invention no 4 in d minor BWV775**  
OR  
**Schumann Von Fremden Menschen und Ländern** (Of Strange Lands and People) from Kinderszenen Op.15
2. Own Choice Contrasting piece, not exceeding 5 minutes

<b>Under 16 Piano</b>	<b>Competition 13</b> <i>Entry fee €25</i>
Two contrasting pieces of competitor's own choice, not exceeding 10 minutes	
<b>Under 18 Piano</b>	<b>Competition 14</b> <i>Entry fee €25</i>
Two contrasting pieces of competitor's own choice, not exceeding 10 minutes	
<b>Senior Piano</b>	<b>Competition 15</b> <i>Entry fee €25</i>
Two contrasting pieces of competitor's own choice, not exceeding 12 minutes	
<b>Peggy Dillon Cup</b> <i>Intermediate piano competition for those aged under 17</i>	<b>Competition 16</b> <i>Entry fee €25</i>
A programme of contrasting pieces, not exceeding 12 minutes	
<b>O' Byrne Cup</b> <i>Advanced piano competition</i>	<b>Competition 17</b> <i>Entry fee €25</i>
A programme of recital standard, not exceeding 15 minutes in length	
<b>Savin Cup</b>	<b>Competition 18</b> <i>Entry fee €25</i>
One movement from a Piano concerto	
<b>Junior Repertoire</b> <i>For players who have not yet completed Grade 4:</i>	<b>Competition 19</b> <i>Entry fee €20</i>
A programme of contrasting pieces, not exceeding 3 minutes	
<b>Intermediate Repertoire</b> <i>For players who have not yet completed Grade 6:</i>	<b>Competition 20</b> <i>Entry fee €25</i>
A programme of contrasting pieces, not exceeding 6 minutes	

## PIANO DUETS

**\*\* NOTE: Duet partners must swap places for the second piece \*\***

### **Under 11 Piano Duet**

#### **Competition 21**

*Entry fee €25 (total)*

1. Set Piece  
**Lightly Row** (arr. David Blackwell) from Piano Star Duets
2. Own Choice Contrasting Piece, not exceeding 3 minutes

### **Under 13 Piano Duet**

#### **Competition 22**

*Entry fee €25 (total)*

1. Set Piece  
**Paganini Caprice no. 24** from The Joy of Piano Duets (Ed. Denes Agay)
2. Own Choice Contrasting Piece, not exceeding 4 minutes

### **Under 15 Piano Duet**

#### **Competition 23**

*Entry fee €25 (total)*

Two contrasting pieces of competitors' own choice not exceeding 10 minutes

### **Senior Piano Duet**

#### **Competition 24**

*Entry fee €30 (total)*

Two contrasting pieces of competitors' own choice not exceeding 12 minutes

---

# STRINGS

---

## VIOLIN

### Beginner Violin

\*\*\* For players who have been learning for under 18 months  
and aged between 5 - 10 years inclusive as of 1 January, 2025  
*Teacher to verify*

### Competition 25

*Entry fee €20*

1. Set Piece **See-saw - no. 25** from Stepping Stones (Colledge)
2. Own choice Contrasting piece, not exceeding 2 minutes

### Under 9 Violin

### Competition 26

*Entry fee €20*

1. Set piece **City lights - no. 24** from Fiddle Time Joggers (Blackwell)
2. Own choice Contrasting piece, not exceeding 2 minutes

### Under 11 Violin

### Competition 27

*Entry fee €20*

1. Set piece **Finale from the Water music - no. 13** (observing repeats) from Fiddle Time Runners (Blackwell)
2. Own choice Contrasting piece, not exceeding 3 minutes

### Under 13 Violin

### Competition 28

*Entry fee €20*

1. Set piece **Romance (Baklanova) - no. 8** from The Young Violinist's Repertoire Book 2
2. Own choice Contrasting piece, not exceeding 4 minutes

### Under 15 Violin

### Competition 29

*Entry fee €20*

1. Set piece **Pastorale Op. 23 No. 1** by Oskar Rieding
2. Own choice Contrasting piece, not exceeding 4 minutes

### **Under 18 Violin**

### **Competition 30**

*Entry fee €25*

1. Set piece      **Second movement: Allegretto from Violin Sonata No.1, Op.105** by Robert Schumann
2. Own choice    Contrasting piece, not exceeding 5 minutes

### **Bernard Cup**

### **Competition 31**

*Entry fee €25*

Two movements from any Violin concerto

### **MacKenzie - Kreisler Cup**

### **Competition 32**

*Entry fee €25*

Any two contrasting Kreisler pieces/arrangements for Violin

### **Junior Repertoire**

*For players who have not yet completed Grade 4:*

### **Competition 33**

*Entry fee €20*

A programme of contrasting pieces, not exceeding 3 minutes

### **Intermediate Repertoire**

*For players who have not yet completed Grade 6:*

### **Competition 34**

*Entry fee €25*

A programme of contrasting pieces, not exceeding 6 minutes

## VIOLA

### **Junior Viola**

For players who have not yet completed Grade 3:

*Teacher to verify*

Two contrasting pieces, not exceeding 5 minutes

### **Competition 35**

*Entry fee €20*

### **Intermediate Viola**

For players **from** Grade 3 but have not yet completed Grade 6:

*Teacher to verify*

Two contrasting pieces, not exceeding 7 minutes

### **Competition 36**

*Entry fee €20*

### **Senior Viola**

For players **with** a minimum of Grade 6:

*Teacher to verify*

Two contrasting pieces, not exceeding 10 minutes

### **Competition 37**

*Entry fee €25*

## CELLO

### **Beginner Cello**

For those who have not yet completed Grade 2

*Teacher to verify*

### **Competition 38**

*Entry fee €20*

1. Set Piece **Chanson Russe** by Tchaikovsky from Time Pieces For Cello volume 1
2. Own Choice Contrasting piece, not exceeding 2 minutes

### **Junior Cello**

For those who have not yet completed Grade 4:

*Teacher to verify*

### **Competition 39**

*Entry fee €20*

1. Set Piece **Minuet No. 2** by J.S.Bach from Suzuki Cello School, volume 1
2. Own Choice Contrasting piece, not exceeding 3 minutes

### **Intermediate Cello**

For those who have not yet completed Grade 6:

*Teacher to verify*

### **Competition 40**

*Entry fee €20*

1. Set Piece **I got Rhythm** from Play Gershwin
2. Own Choice Contrasting piece, not exceeding 4 minutes

### **Senior Cello**

For students who have reached a minimum of Grade 6:

*Teacher to verify*

### **Competition 41**

*Entry fee €25*

1. Set Piece **Lied ohne Worte, Op. 109** by Mendelssohn from Cellissimo  
Appassionato ed. Schott
2. Own Choice Contrasting piece, not exceeding 6 minutes



## DOUBLE BASS

### Beginner Double Bass

For students who have not yet completed Grade 2:

*Teacher to verify*

### Competition 42

*Entry fee €20*

1. Set Piece **Knocking on the Door** by Caroline Emery & John Leach from Bass is Best! Yorke Mini-Bass Book 1 (Yorke)
2. Own Choice Contrasting piece, not exceeding 2 minutes

### Junior Double Bass

For students who have not yet completed Grade 4:

*Teacher to verify*

### Competition 43

*Entry fee €20*

1. Set Piece **Galoppe** arr. Slatford & Bullard by Herz from Time Pieces for Double Bass, Vol. 1 (ABRSM)
2. Own Choice Contrasting piece, not exceeding 3 minutes

### Intermediate Double Bass

For students who have not yet completed Grade 6:

*Teacher to verify*

### Competition 44

*Entry fee €20*

1. Set Piece **La Cumparista** by Gerado Matos Rodriguez arr. Edward Huws Jones from Grade by Grade Double Bass
2. Own Choice Contrasting piece, not exceeding 4 minutes

### Senior Double Bass

For students who have completed a minimum of Grade 6

### Competition 45

*Entry fee €25*

*Teacher to verify*

1. Set Piece **America** (from West Side Story) (observing repeats) by L. Bernstein from Amazing Solos for Double Bass, arr. Schofield
2. Own Choice Contrasting piece, not exceeding 6 minutes

---

# CLASSICAL GUITAR

---

All competitors in solo competitions are to play unaccompanied.

## Beginner Guitar

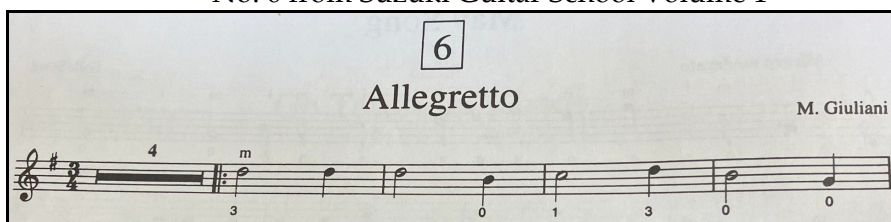
For students up to and including completed Grade 1

Teacher to verify

## Competition 46

Entry fee €20

1. Set piece Allegretto by Mauro Giuliani (observing repeats)  
- No. 6 from Suzuki Guitar School Volume 1



2. Own choice Contrasting piece, not exceeding 2 minutes

## Junior Guitar

For students who have completed between Grades 2 - 3

Teacher to verify

## Competition 47

Entry fee €20

1. Set piece **First Exercise on the E string** by J.K. Mertz  
- Schule für die Gitarre, pg. 15 (available from IMSLP)



2. Own choice Contrasting piece, not exceeding 3 minutes.

### Intermediate Guitar

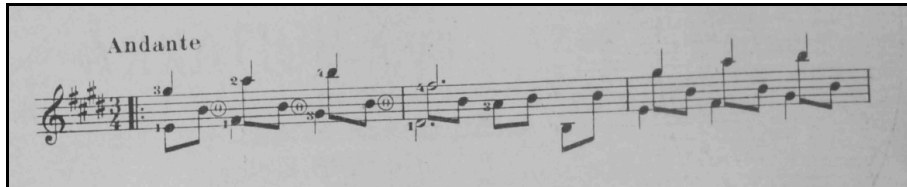
For students who have completed between Grades 4 – 6

Teacher to verify

### Competition 48

Entry fee €20

1. Set piece **Lagrima** by Francisco Tárrega (observing repeats)  
- Available from IMSLP



2. Own choice Contrasting piece, not exceeding 5 minutes.

### Senior Guitar

For students who have completed Grade 7 and over

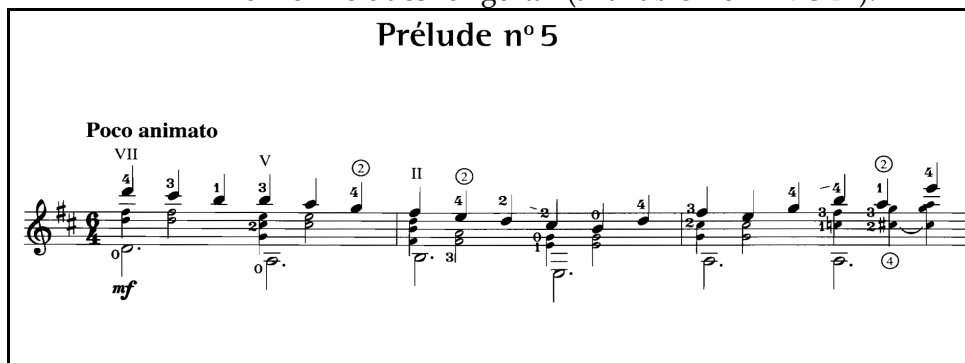
Teacher to verify

### Competition 49

Entry fee €25

1. Set piece **Prelude no. 5 in D Major** by Heitor Villa-Lobos (observing repeats)  
- from 5 Preludes for guitar (available from IMSLP).

**Prélude n° 5**

A musical score for the piece 'Prélude n° 5' by Heitor Villa-Lobos. The score is written on a single staff in treble clef, with a key signature of two sharps (D major) and a time signature of 4/4. The tempo marking 'Poco animato' is written above the staff. The music features a series of chords and single notes, with various fingering numbers (1-4) and circled numbers (1, 2, 3, 4) indicating specific techniques or fingerings. The piece is enclosed in a rectangular box.

2. Own choice Contrasting piece, not exceeding 5 minutes.

### Guitar Chamber Music

For all guitar students

### Competition 50

Entry fee €5

per person

Two own choice, contrasting works for 2, 3, or 4 guitars, not to exceed 6 minutes in total.

---

# RECORDER

---

## **Under 9 Recorder**

## **Competition 51**

*Entry fee €20*

Two Contrasting Pieces, not exceeding 4 minutes

## **Under 12 Recorder**

## **Competition 52**

*Entry fee €20*

Two Contrasting Pieces, not exceeding 8 minutes

## **Under 16 Recorder**

## **Competition 53**

*Entry fee €20*

Two Contrasting Pieces, not exceeding 10 minutes

## **Senior Recorder**

## **Competition 54**

*Entry fee €25*

Two Contrasting Pieces, not exceeding 12 minutes

**NOTE:** Age on January 1, 2025

---

## WOODWIND

---

### FLUTE, OBOE, CLARINET, BASSOON, SAXOPHONE

#### 10 Years and Under Woodwinds

**Competition 55**

*Entry fee €20*

Two Contrasting Pieces, not exceeding 4 minutes

#### 12 Years and Under Woodwinds

**Competition 56**

*Entry fee €20*

Two Contrasting Pieces, not exceeding 6 minutes

#### 14 Years and Under Woodwinds

**Competition 57**

*Entry fee €20*

Two Contrasting Pieces, not exceeding 8 minutes

#### 16 Years and Under Woodwinds

**Competition 58**

*Entry fee €20*

Two Contrasting Pieces, not exceeding 10 minutes

#### Senior Woodwinds

**Competition 59**

*Entry fee €25*

Two Contrasting Pieces, not exceeding 12 minutes

**NOTE:** Age on January 1, 2025

---

# BRASS

---

## ALL BRASS INSTRUMENTS

### **Beginner Brass**

*Grade 1 and under Teacher to verify*

Two pieces of own choice (Accompanied or Unaccompanied)  
Total time not to exceed 6 minutes

### **Competition 60**

*Entry fee €20*

### **Junior Brass**

*Grades 2-3 Teacher to verify*

Two pieces of own choice (Accompanied or Unaccompanied)  
Total time not to exceed 8 minutes

### **Competition 61**

*Entry fee €20*

### **Intermediate Brass**

*Grades 4 – 5 Teacher to verify*

Two pieces of own choice (Accompanied or Unaccompanied)  
Total time not to exceed 10 minutes

### **Competition 62**

*Entry fee €20*

### **Senior Brass**

*Grades 6 -7 Teacher to verify*

Two pieces of own choice (Accompanied or Unaccompanied)  
Total time not to exceed 15 minutes

### **Competition 63**

*Entry €25*

### **Advanced Brass**

*Grades 8 and over Teacher to verify*

Two pieces of own choice (Accompanied or Unaccompanied)  
Total time not to exceed 20 minutes

### **Competition 64**

*Entry €25*

---

## NON-COMPETITIVE

---

### ALL INSTRUMENTS

#### Open Recital

#### Competition 65

*Entry Fee €5*

This non-competitive section is open to performers of any instrument.

1. Each performer will receive a Certificate of Participation.
2. There will be an encouraging audience in a recital setting.
3. No official Accompanist is available for this competition, but teachers may accompany the students themselves or arrange their own Accompanist.

**Requirement:** One piece, not exceeding 3 minutes.

NOTE: This is open to students of all levels who do not wish to compete with others in their own instrument, or those who do not fit the criteria for existing Competitions.

**\*\*Limited spaces available.**

#### Leaving Certificate

#### Competition 66

*Entry Fee €20*

This is an opportunity for Leaving Certificate students to perform part of their chosen programme for the Leaving Certificate examination

This section is open to performers of any instrument and /or voice.

1. An experienced examiner will be listening to the performances.
2. Each performer will receive feedback from the examiner.
3. Performers will need to make their own arrangements with their own Accompanist.

**Requirement:** Programme not to exceed 10 minutes (i.e. probably 2 or 3 pieces in total)

**\*\*Limited spaces available.**